

Directive Européenne 2002/49/CE du 25 juin 2002, relative à l'évaluation et la  
gestion du bruit dans l'environnement

2ème échéance

**Réseau Routier Départemental**

Cartes de bruit stratégiques des infrastructures de transports terrestres  
Trafic compris entre 8200v/j et 16400v/j

**5**

**REPRÉSENTATION CARTOGRAPHIQUE  
DES ROUTES DEPARTEMENTALES**

**5a – Cartes : A Lden**

(voir la liste des communes pour localiser la (les) planche (s) correspondante (s))

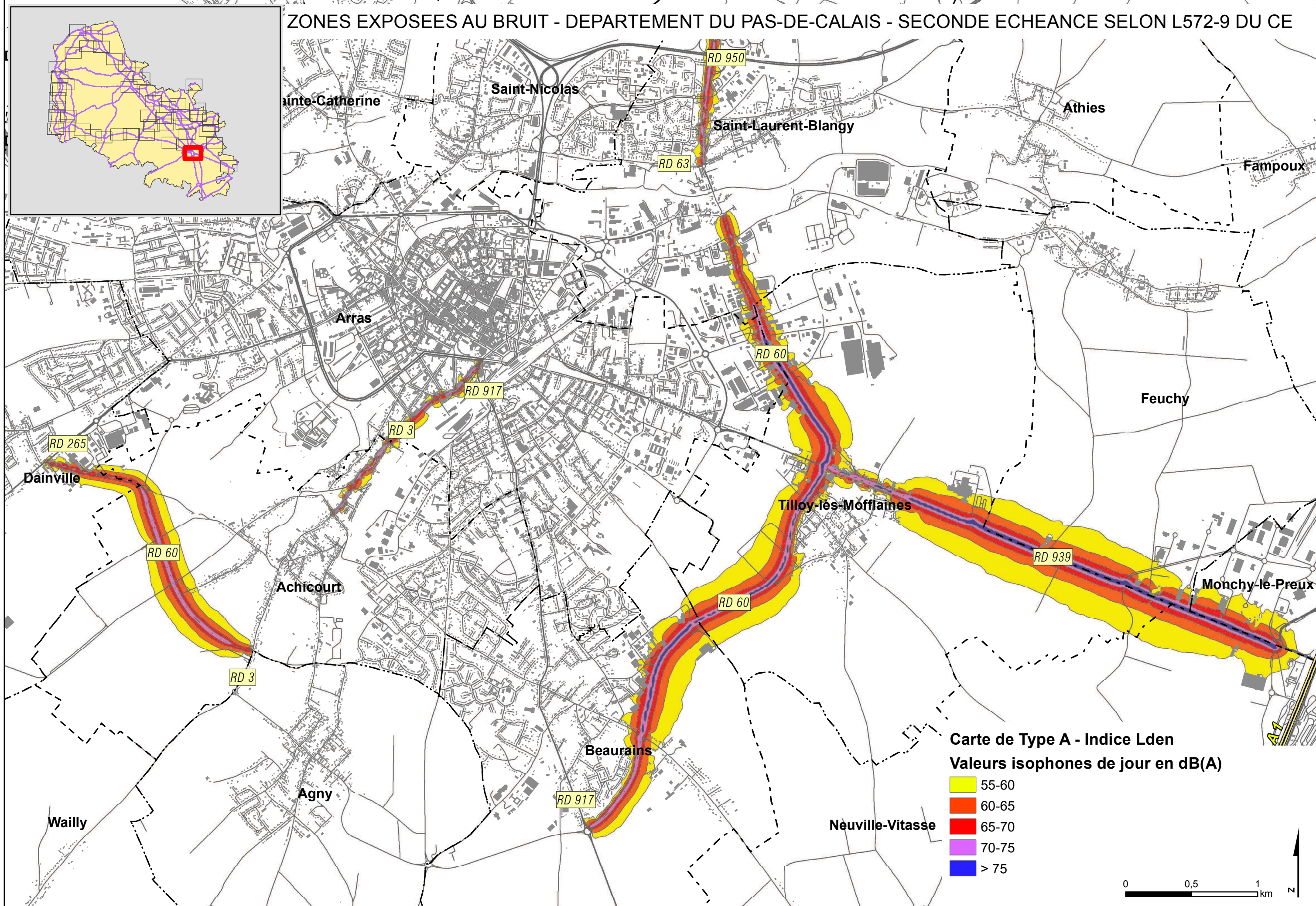
Vu pour être annexé à l'arrêté préfectoral  
en date du

**24 FEV. 2014**



Denis ROBIN

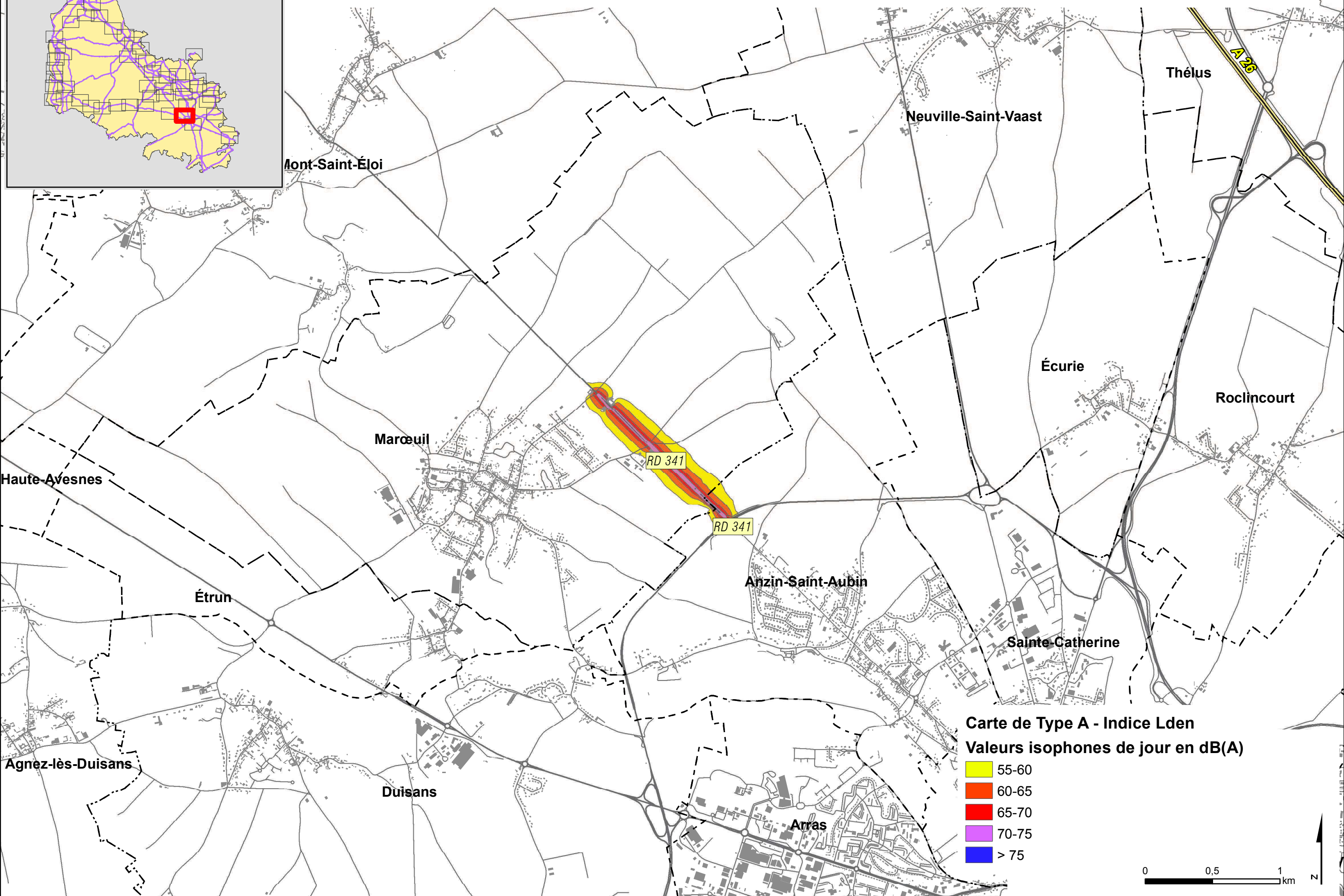
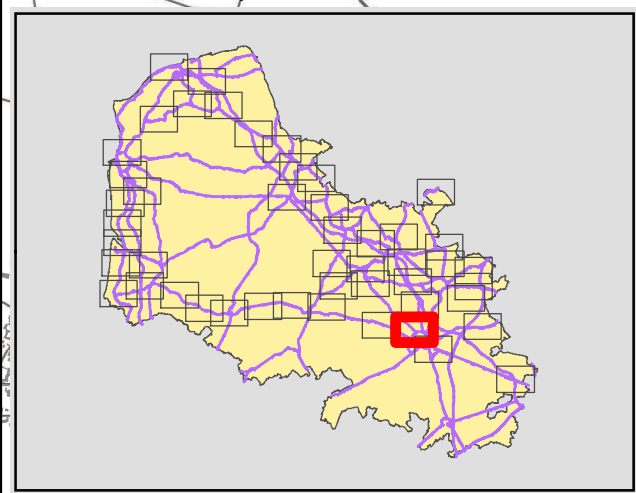
# ZONES EXPOSEES AU BRUIT - DEPARTEMENT DU PAS-DE-CALAIS - SECONDE ECHEANCE SELON L572-9 DU CE



**Carte de Type A - Indice Lden**  
**Valeurs isophones de jour en dB(A)**

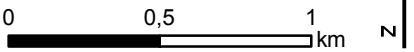
- 55-60
- 60-65
- 65-70
- 70-75
- > 75

ZONES EXPOSEES AU BRUIT - DEPARTEMENT DU PAS-DE-CALAIS - SECONDE ECHEANCE SELON L572-9 DU CE

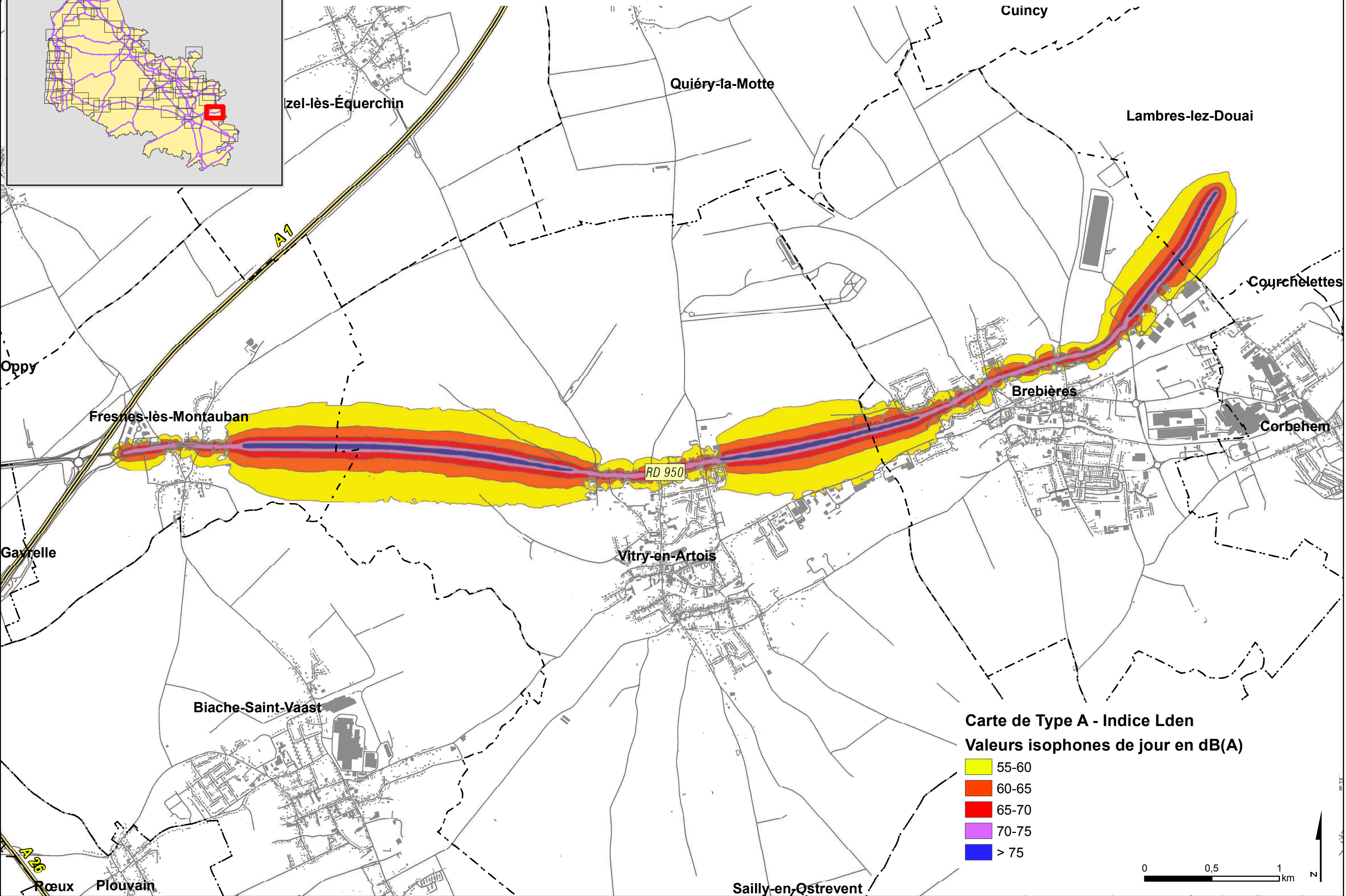
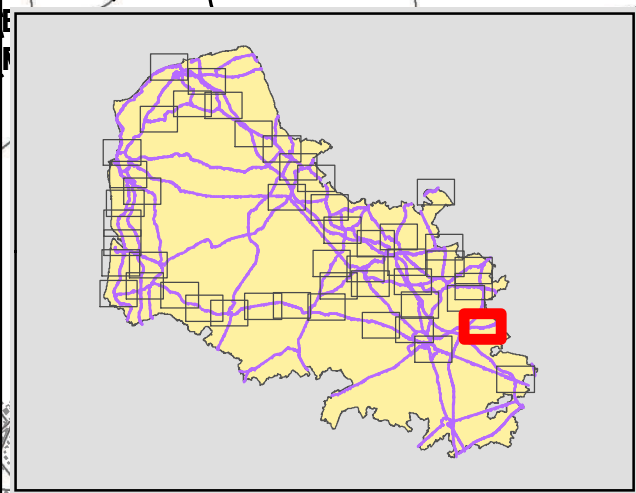


**Carte de Type A - Indice Lden**  
**Valeurs isophones de jour en dB(A)**

Yellow	55-60
Orange	60-65
Red	65-70
Purple	70-75
Blue	> 75

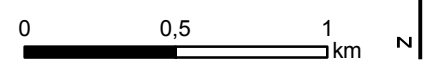


ZONES EXPOSEES AU BRUIT - DEPARTEMENT DU PAS-DE-CALAIS - SECONDE ECHEANCE SELON L572-9 DU CE

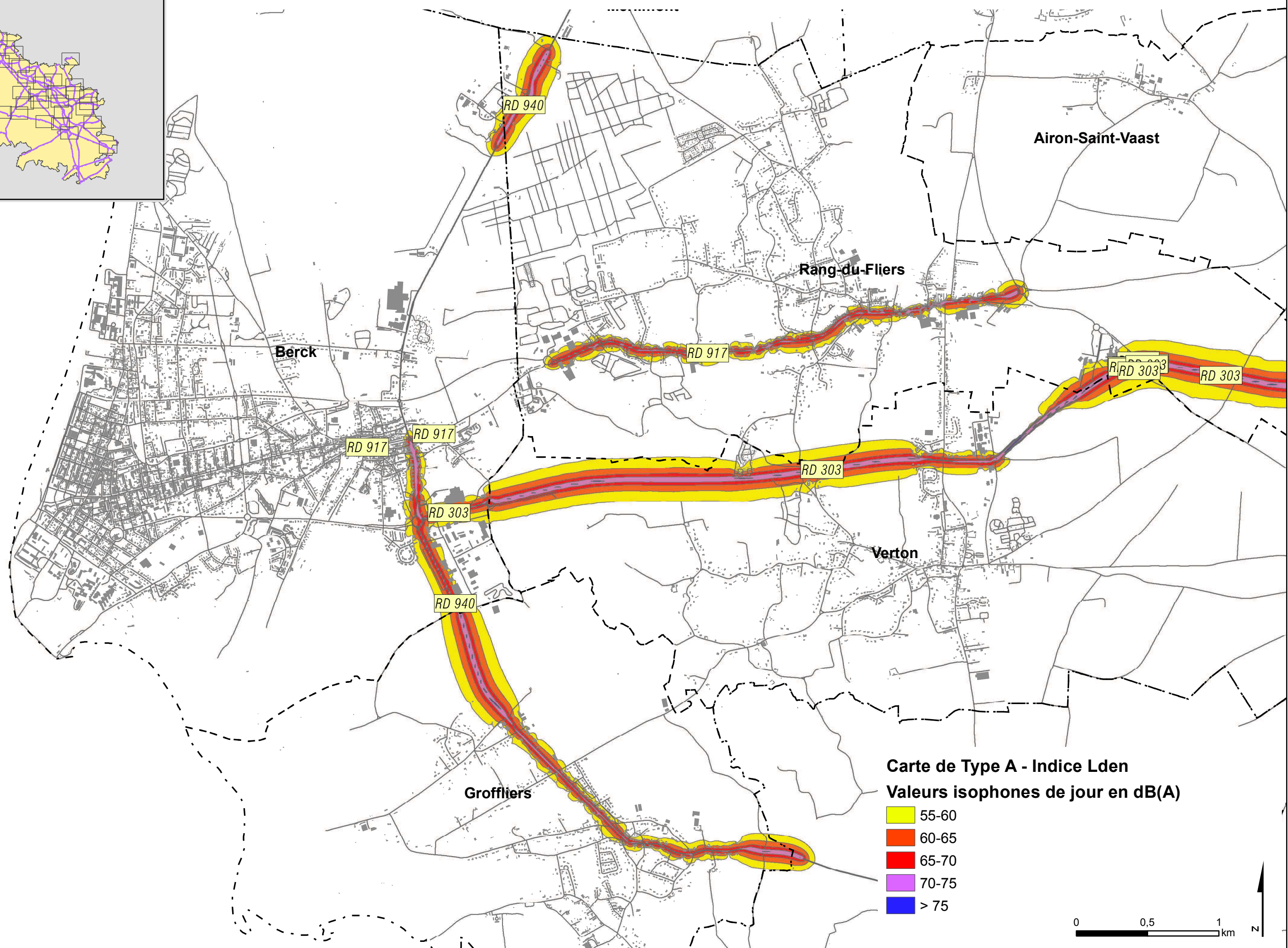
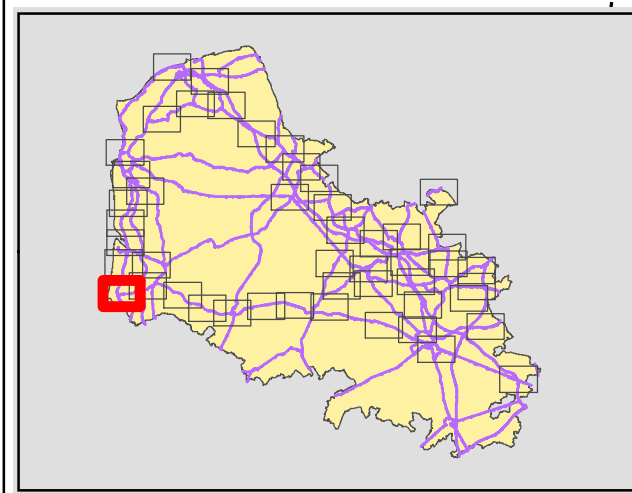


**Carte de Type A - Indice Lden**  
**Valeurs isophones de jour en dB(A)**

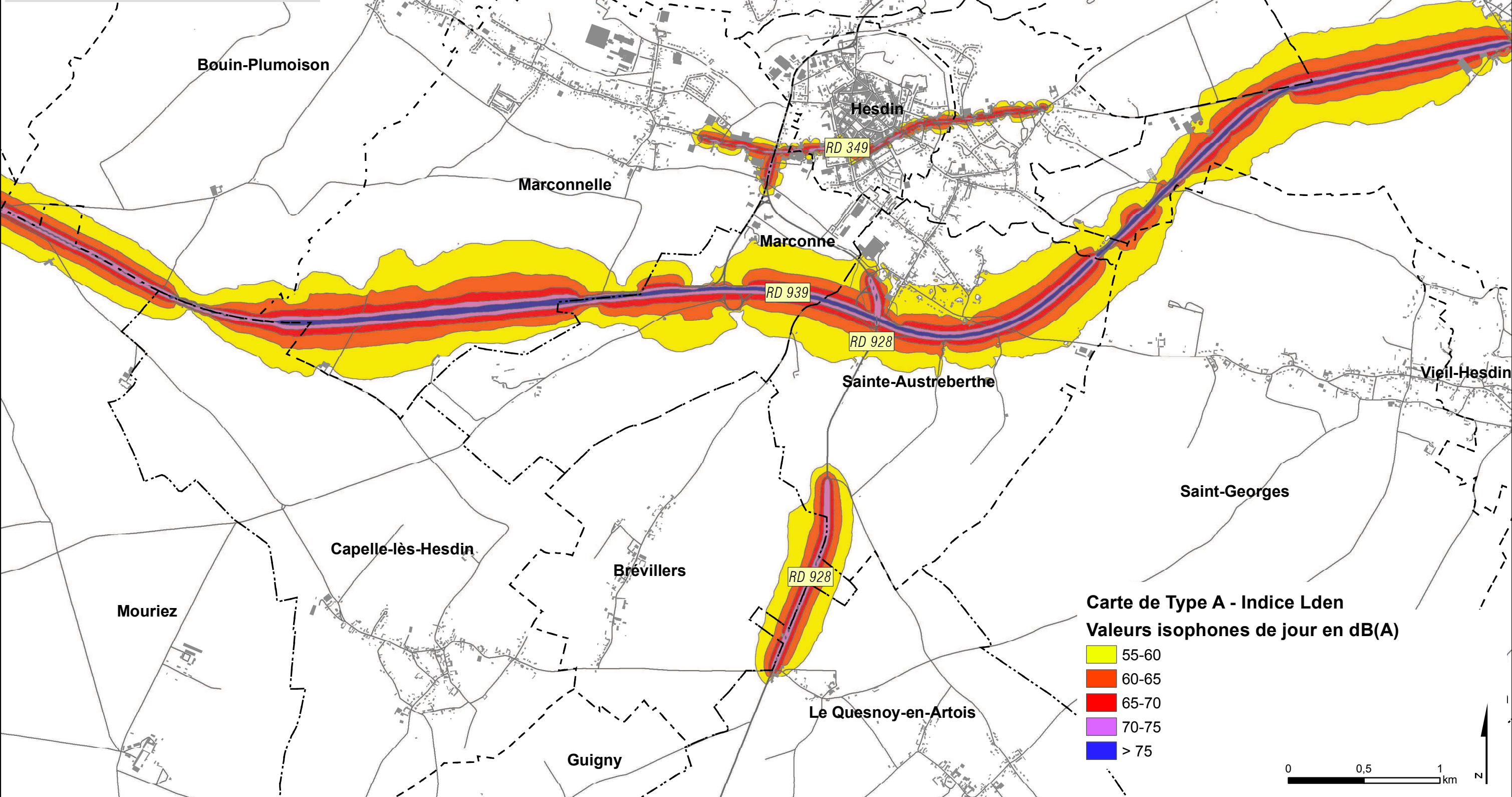
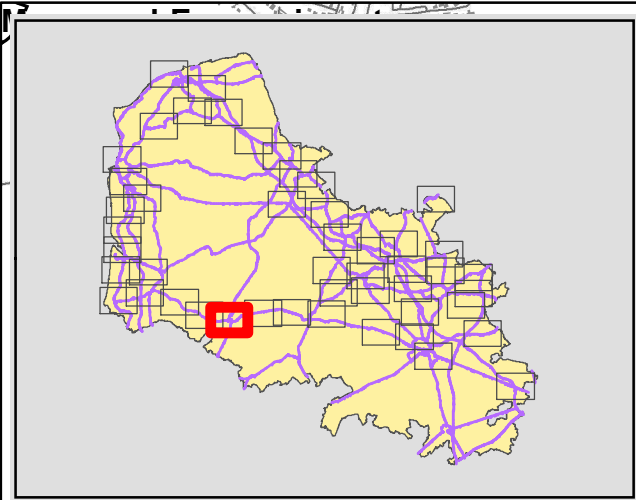
Yellow	55-60
Orange	60-65
Red	65-70
Purple	70-75
Blue	> 75



## ZONES EXPOSEES AU BRUIT - DEPARTEMENT DU PAS-DE-CALAIS - SECONDE ECHEANCE SELON L572-9 DU CE

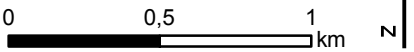


ZONES EXPOSEES AU BRUIT - DEPARTEMENT DU PAS-DE-CALAIS - SECONDE ECHEANCE SELON L572-9 DU CE

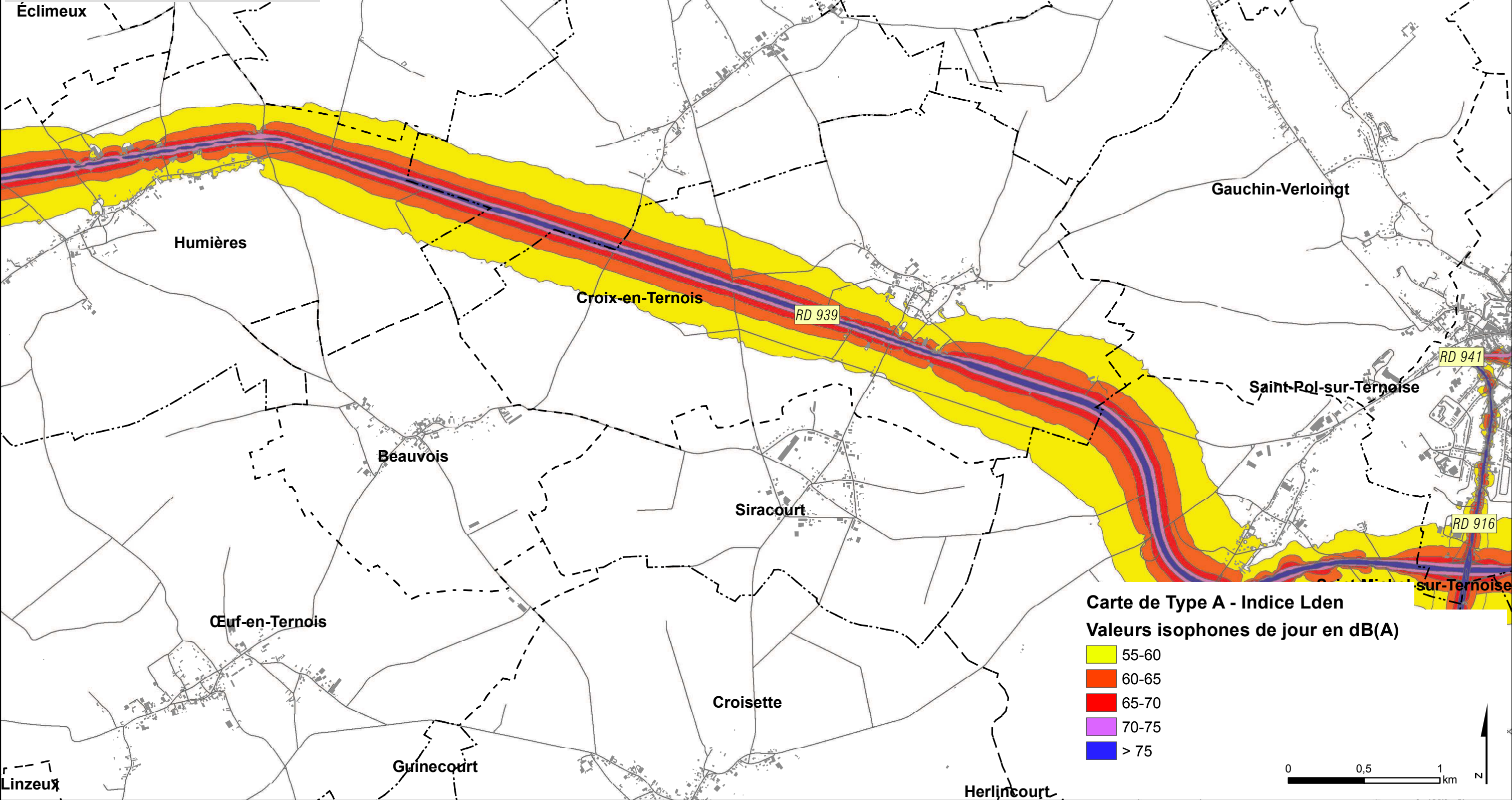
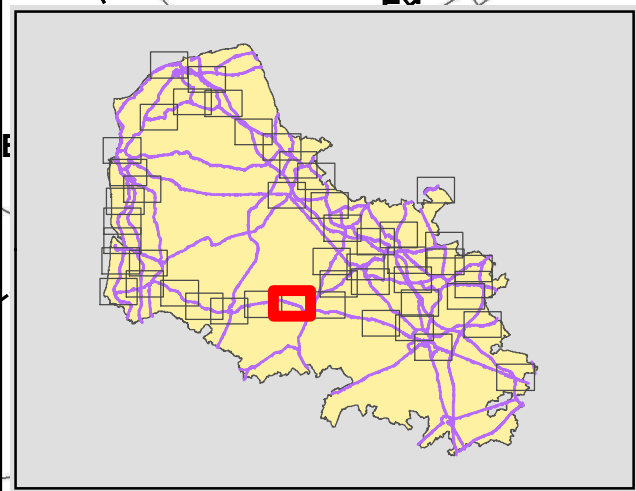


**Carte de Type A - Indice Lden**  
**Valeurs isophones de jour en dB(A)**

Yellow	55-60
Orange	60-65
Red	65-70
Purple	70-75
Blue	> 75

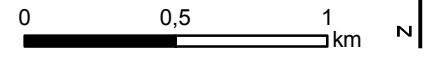


ZONES EXPOSEES AU BRUIT - DEPARTEMENT DU PAS-DE-CALAIS - SECONDE ECHEANCE SELON L572-9 DU CE

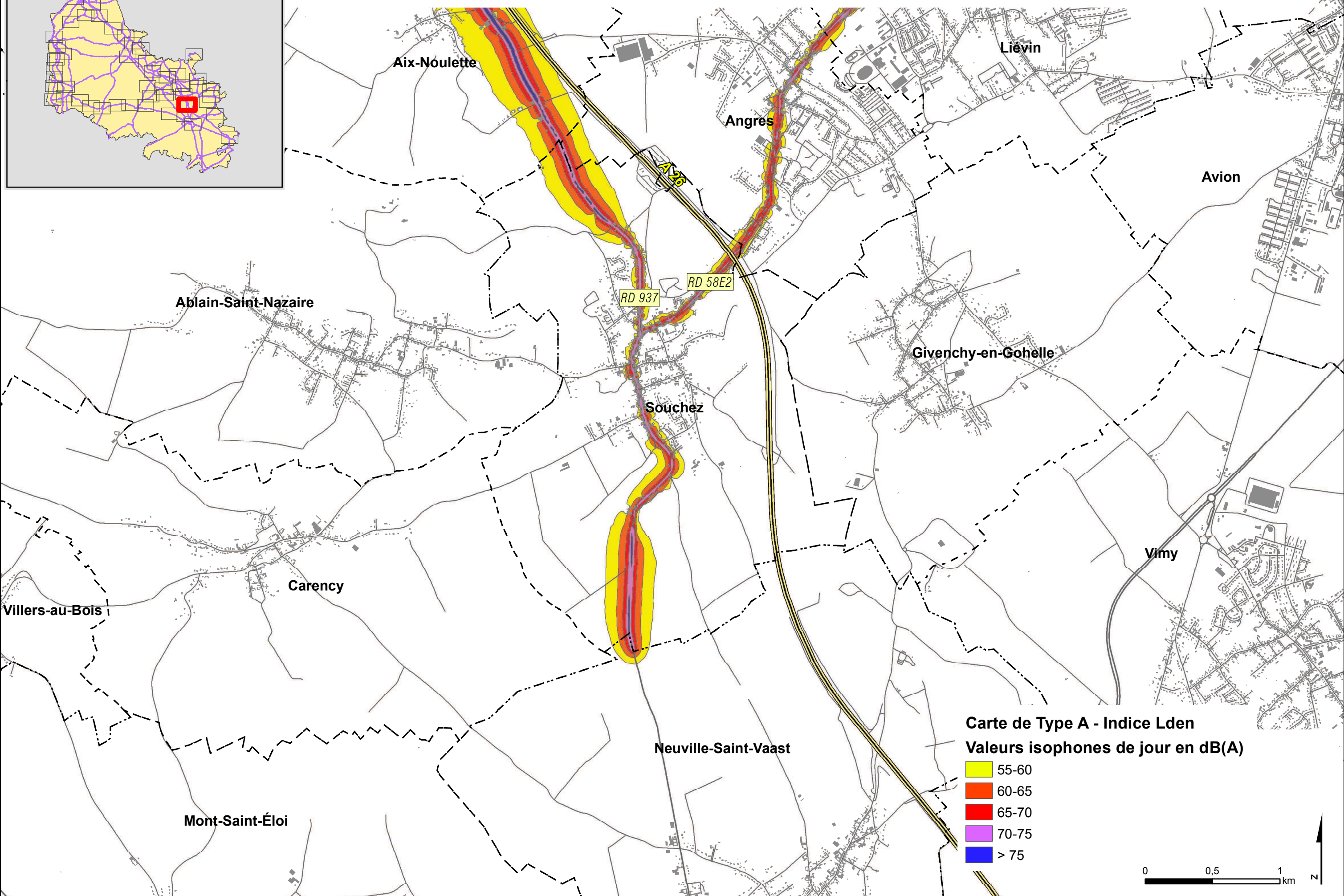
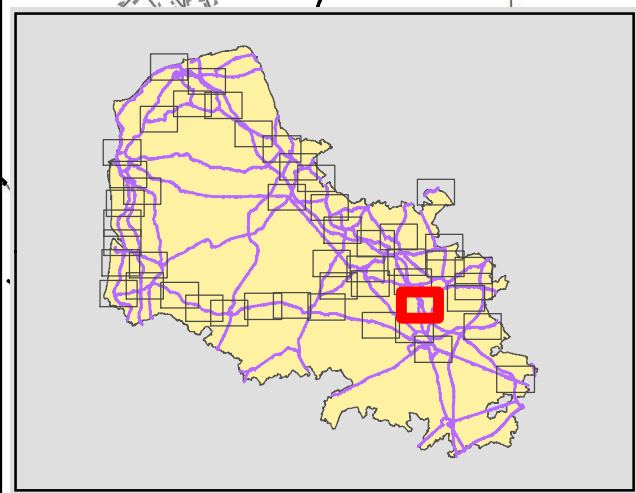


**Carte de Type A - Indice Lden**  
**Valeurs isophones de jour en dB(A)**

Yellow	55-60
Orange	60-65
Red	65-70
Purple	70-75
Blue	> 75

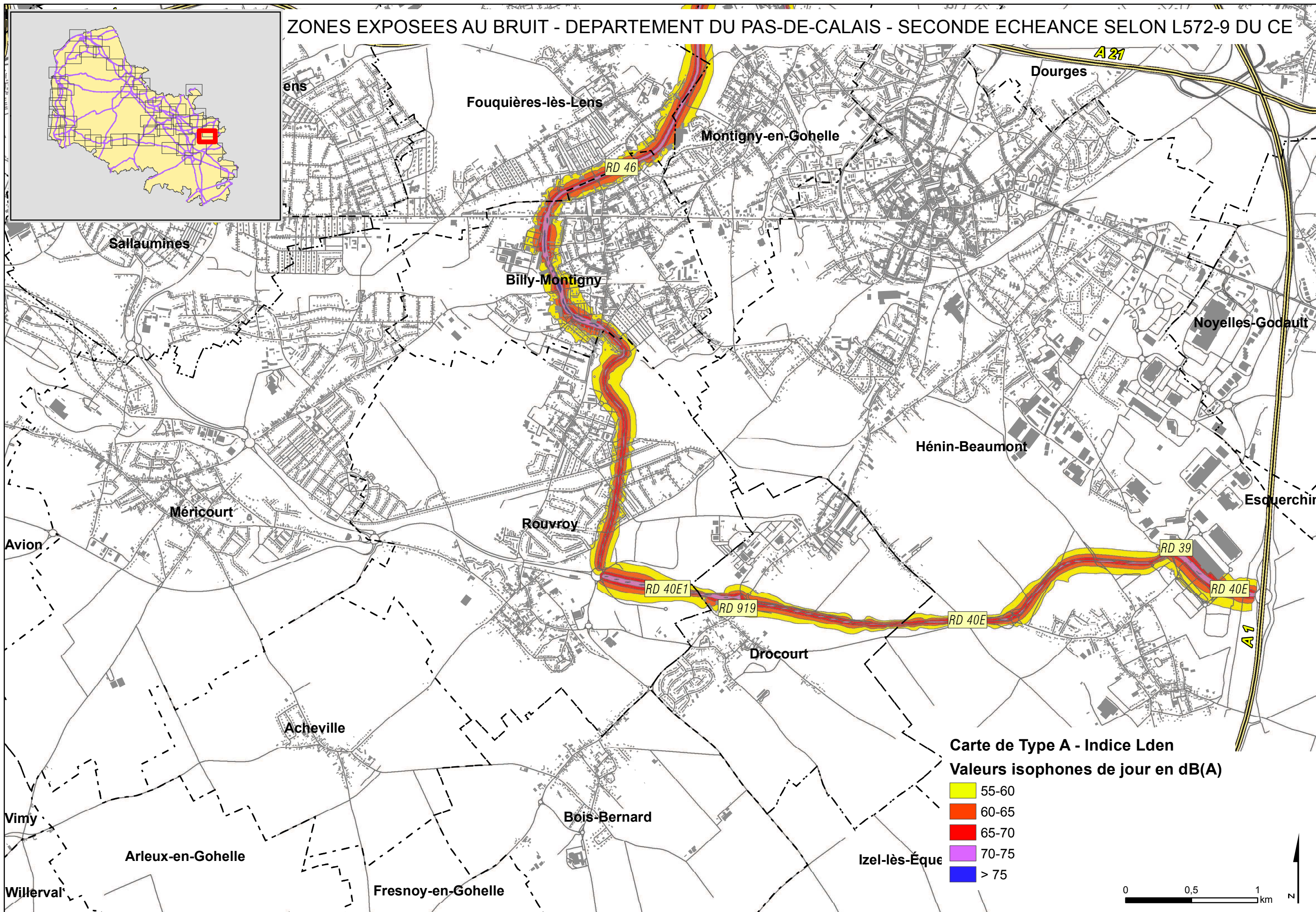


ZONES EXPOSEES AU BRUIT - DEPARTEMENT DU PAS-DE-CALAIS - SECONDE ECHEANCE SELON L572-9 DU CE



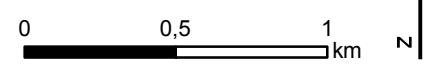


ZONES EXPOSEES AU BRUIT - DEPARTEMENT DU PAS-DE-CALAIS - SECONDE ECHEANCE SELON L572-9 DU CE

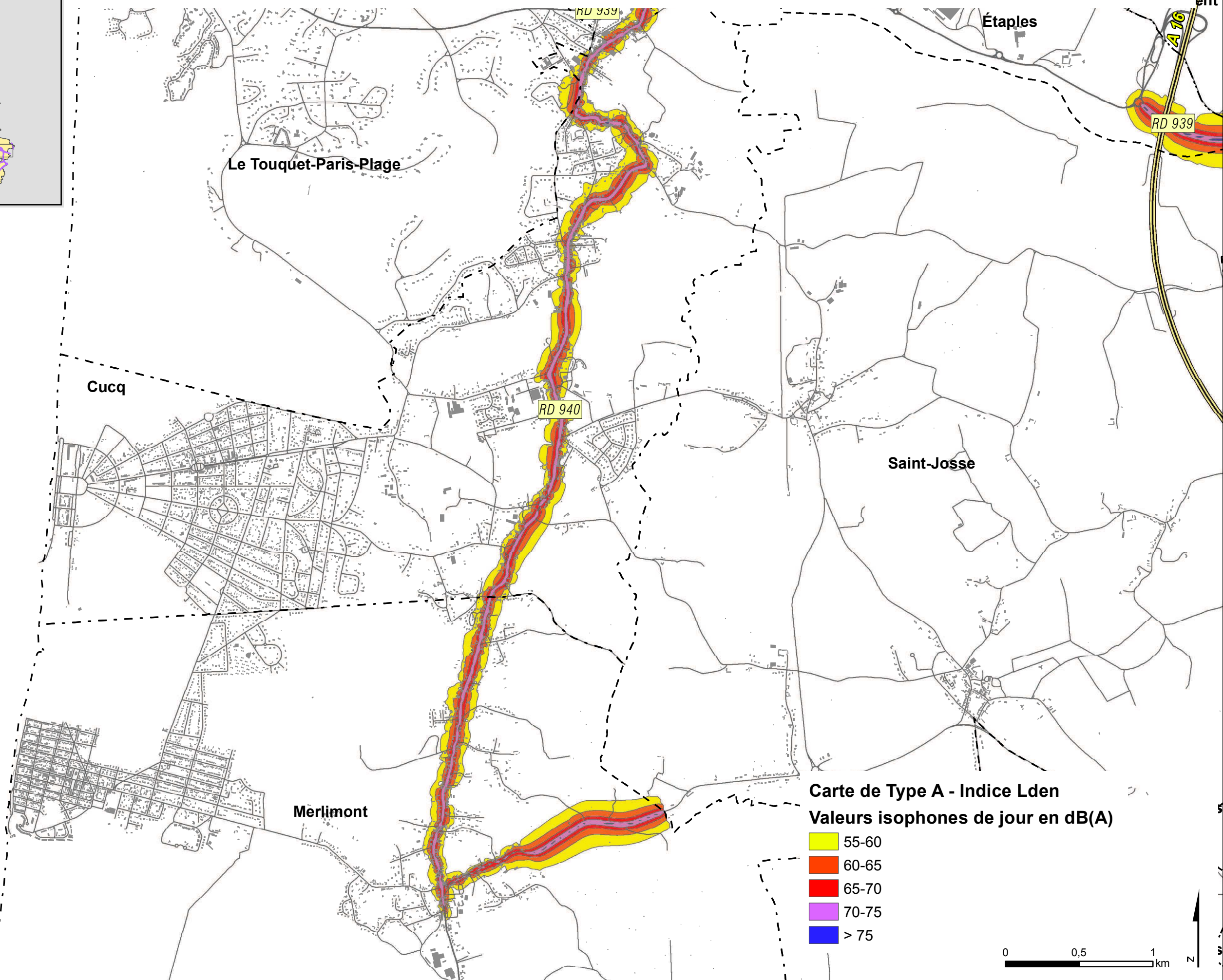
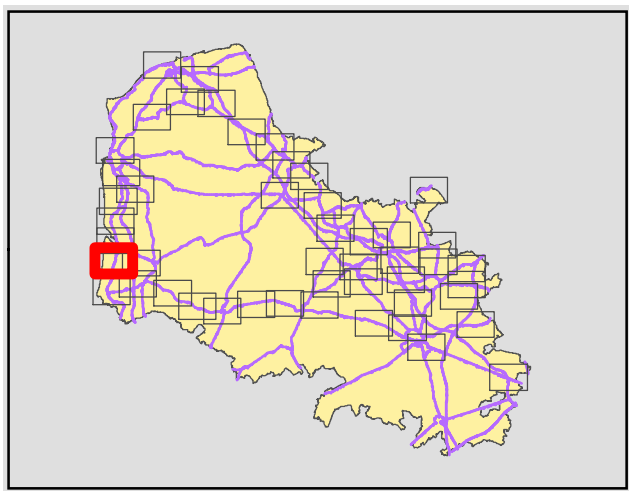


**Carte de Type A - Indice Lden**  
**Valeurs isophones de jour en dB(A)**

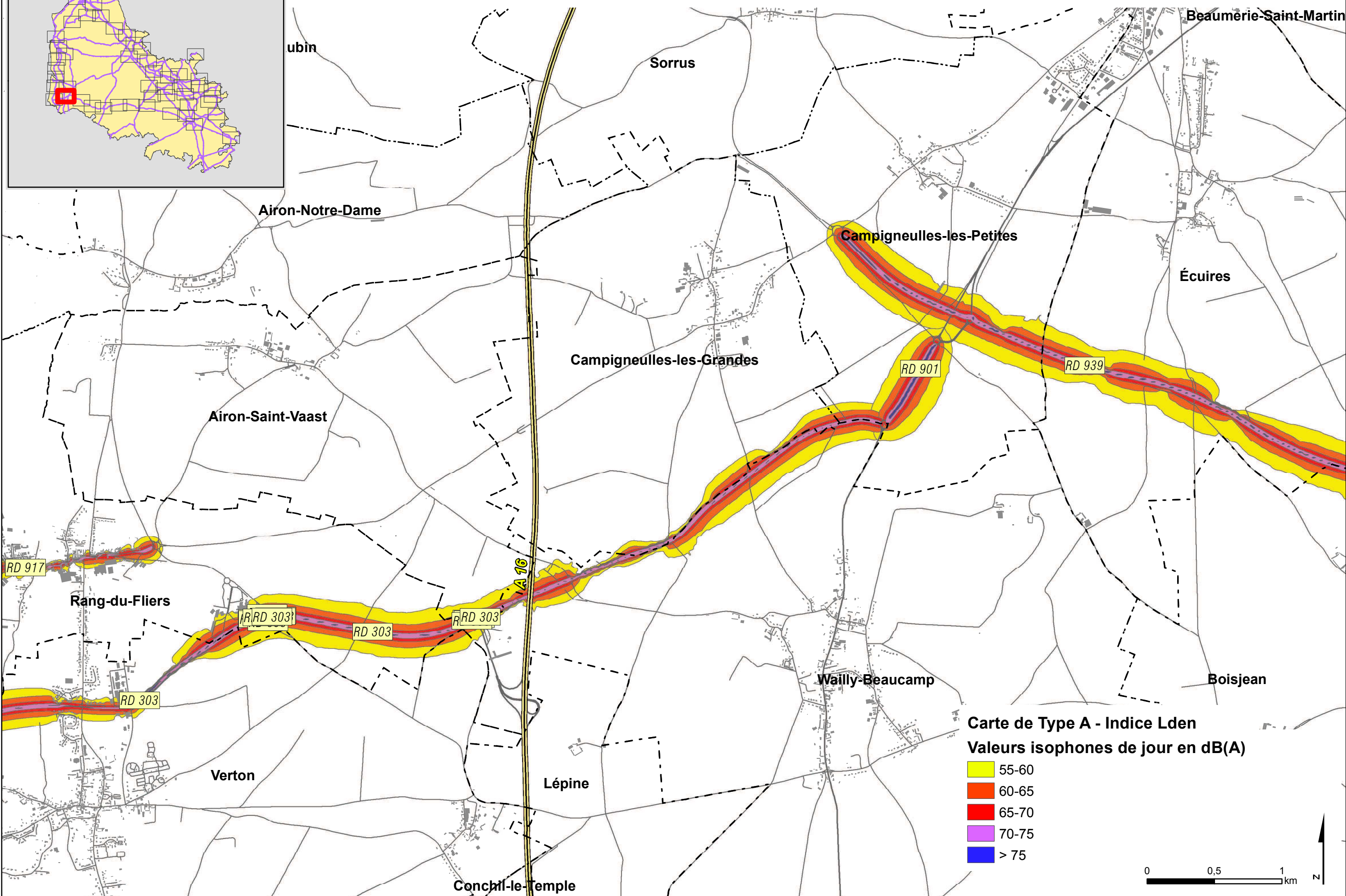
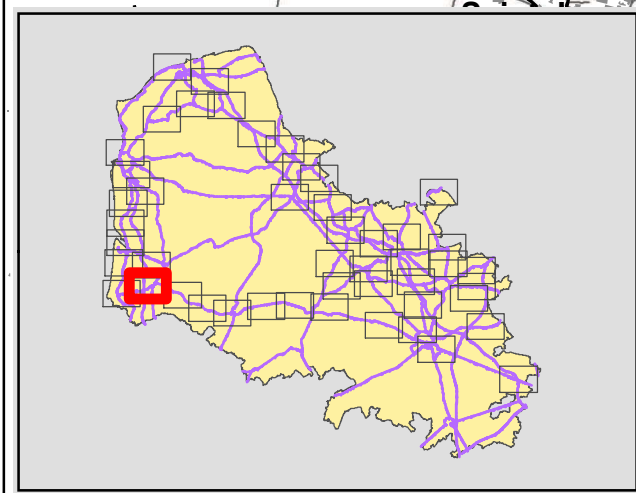
Yellow	55-60
Orange	60-65
Red	65-70
Purple	70-75
Blue	> 75



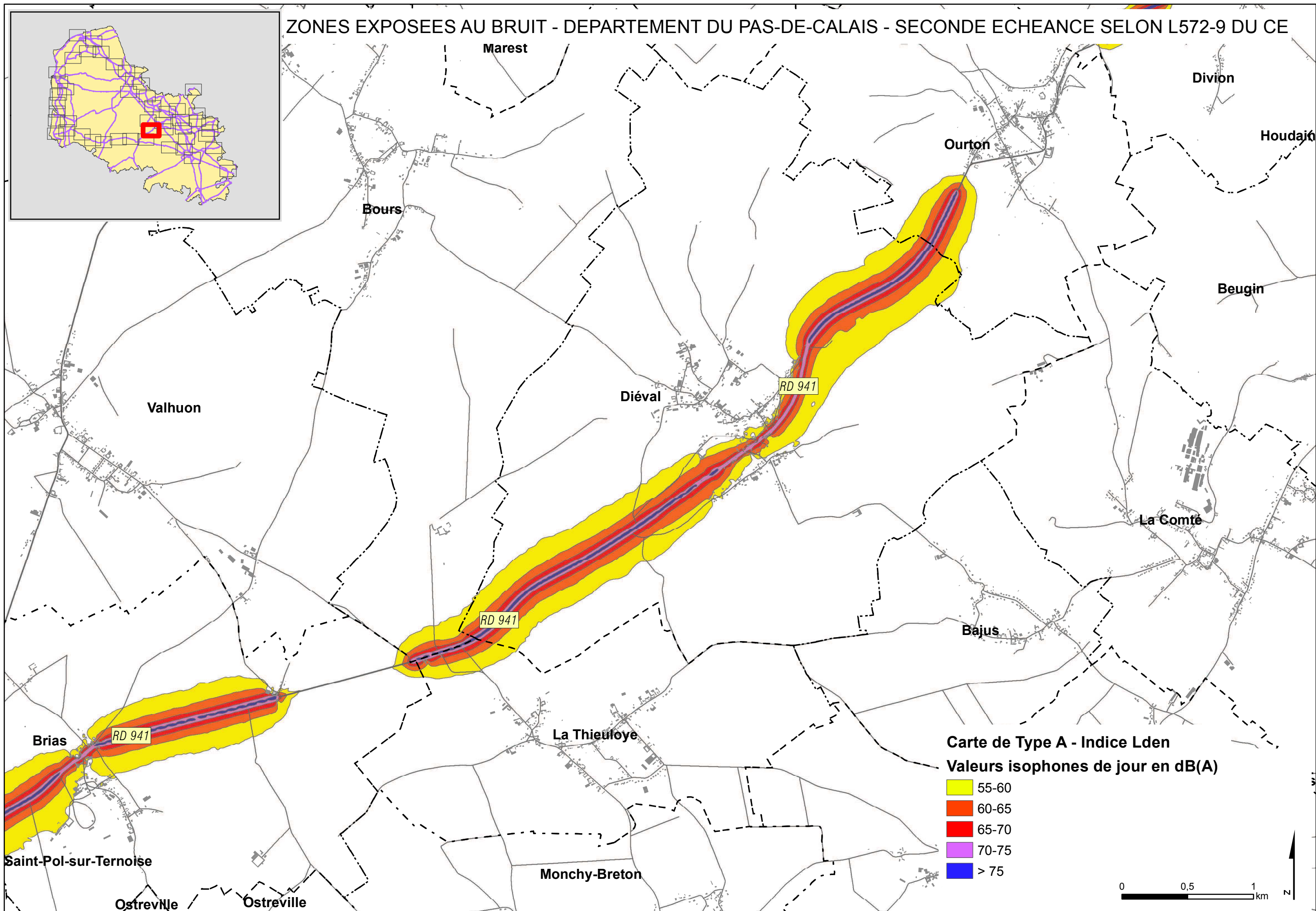
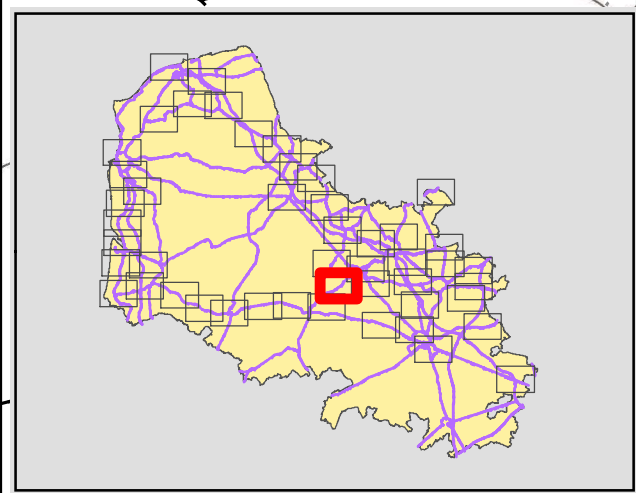
# ZONES EXPOSEES AU BRUIT - DEPARTEMENT DU PAS-DE-CALAIS - SECONDE ECHEANCE SELON L572-9 DU CE



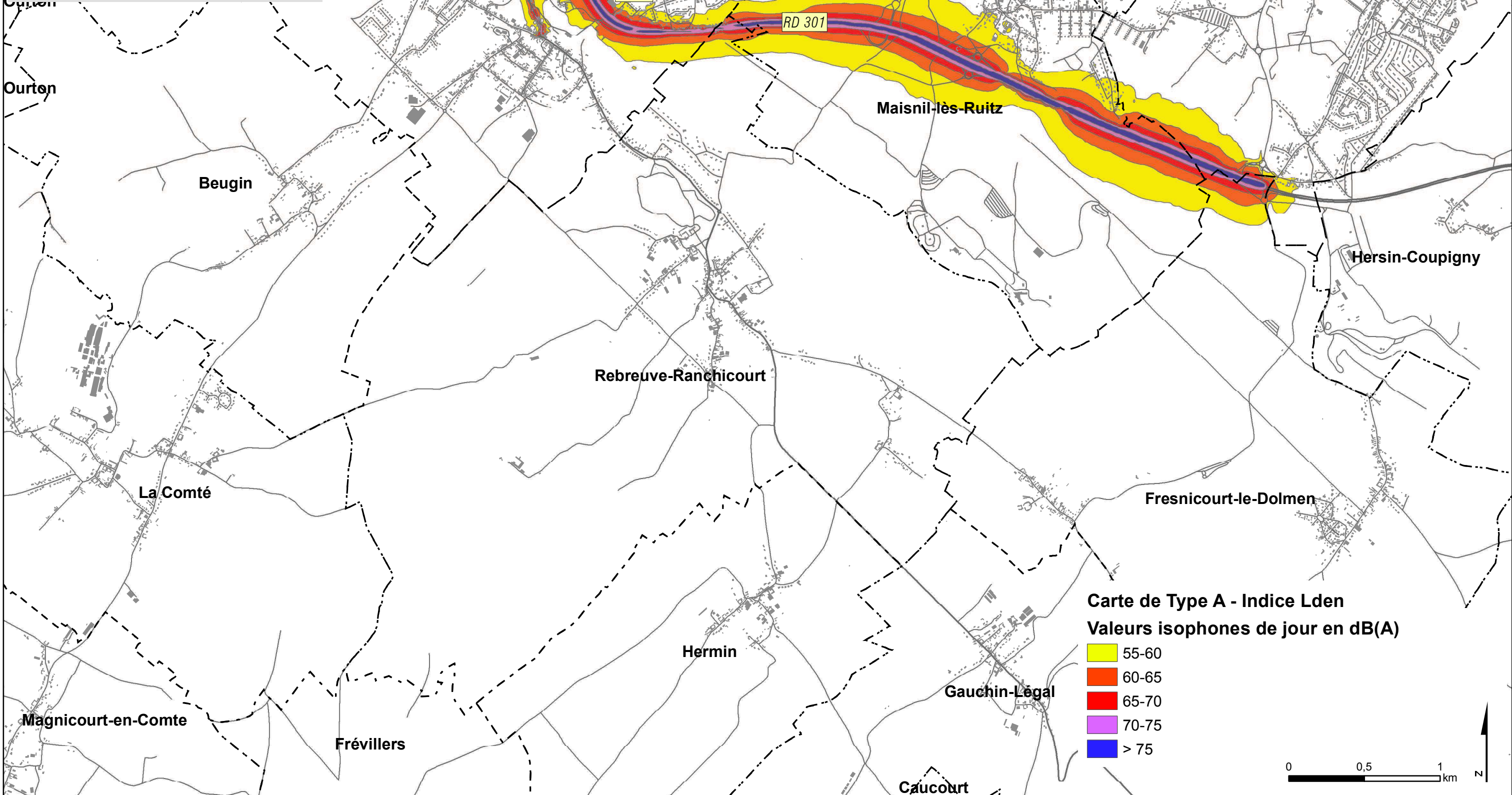
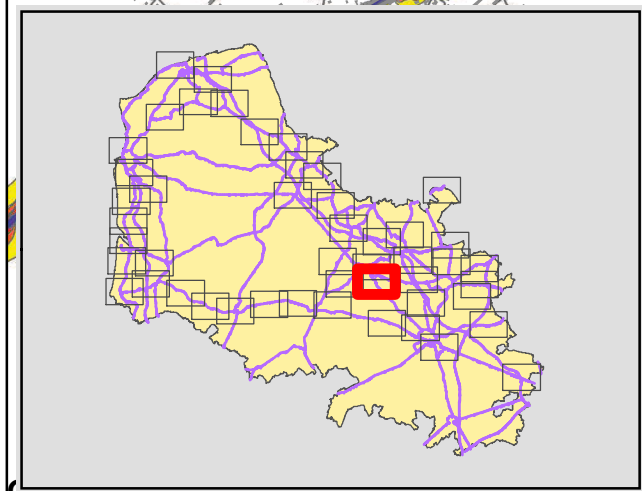
ZONES EXPOSEES AU BRUIT - DEPARTEMENT DU PAS-DE-CALAIS - SECONDE ECHEANCE SELON L572-9 DU CE



ZONES EXPOSEES AU BRUIT - DEPARTEMENT DU PAS-DE-CALAIS - SECONDE ECHEANCE SELON L572-9 DU CE



# ZONES EXPOSEES AU BRUIT - DEPARTEMENT DU PAS-DE-CALAIS - SECONDE ECHEANCE SELON L572-9 DU CE



**Carte de Type A - Indice Lden**  
**Valeurs isophones de jour en dB(A)**

Yellow	55-60
Orange	60-65
Red	65-70
Purple	70-75
Blue	> 75